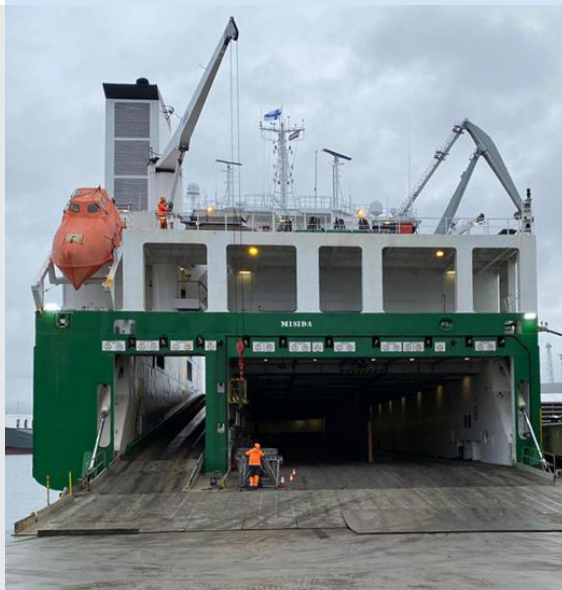


VESSEL PARTICULARS

Owners: Godby Shipping
Managing owners: Sea-Cargo AS
Builder: J.J. Sietas KG Schiffswerft
Built: 2007
Flag: Finnish
Homeport: Finström
Class: DNV GL +100 A5 E4
 Finnish/Swedish Ice Class
 1A Super
Call sign: OJNC
IMO number: 9348948

MAIN DIMENSIONS

Deadweight: 11,407 mts
Draught (SW): 7,26 m
Length overall: 165,75 m
Moulded breadth: 23,40 m
Gross tonnage: 15,586 t
Net tonnage: 4,676 t



CARGO CAPACITIES

| | Weather deck: | Main deck: | Lower hold: |
|----------------------------|----------------------|----------------------|----------------------|
| LM: | 859 m | 820 m | 476 m |
| Deck area: | 2610 m ² | 2554 m ² | 1516 m ² |
| Height: | 4,60 m (garage) | 5,00 m | 5,00 m |
| Deck load: | 2,5 t/m ² | 5,0 t/m ² | 8,0 t/m ² |
| Container capacity: | 484 TEU | - | - |

RAMPS

Stern ramp 13 x 21 m (LxB), total load 200 t.
 Fixed ramp main deck - tank top, slope <8°
 Fixed ramp main deck - weather deck, slope >7°

Garage = fully covered area under accommodation on weather deck.
 Air drying plant for cargo holds.

Ro-Ro vessel fully equipped for transport of trailers and other wheeled cargo.
 Also suitable for transport of containers and flats. Driver cabins may be available on request.