

MV MISIDA

RO-RO VESSEL

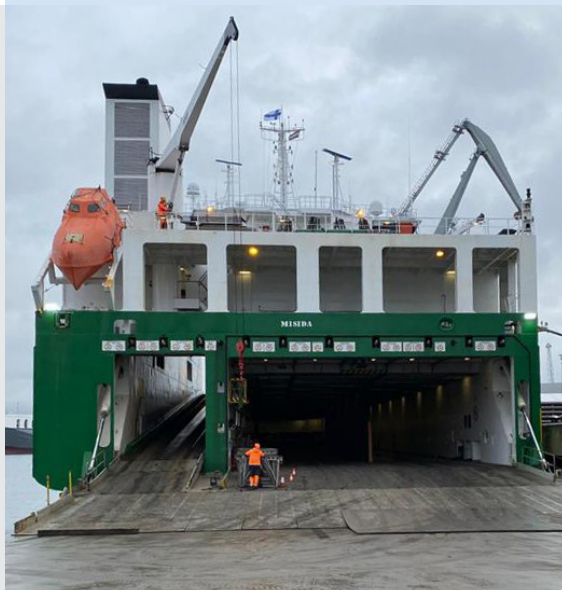
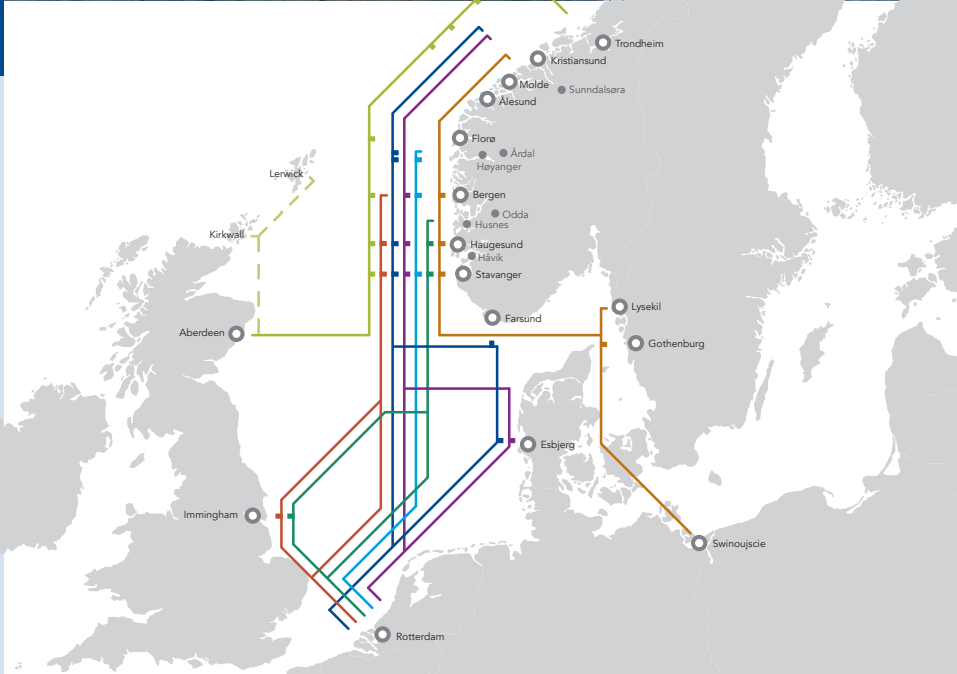


VESSEL PARTICULARS

Owners: Godby Shipping
Managing owners: Sea-Cargo AS
Builder: J.J. Sietas KG Schiffswerft
Built: 2007
Flag: Finnish
Homeport: Finström
Class: DNV GL +100 A5 E4
 Finnish/Swedish Ice Class
 1A Super
Call sign: OJNC
IMO number: 9348948

MAIN DIMENSIONS

Deadweight: 11,407 mts
Draught (SW): 7,26 m
Length overall: 165,75 m
Moulded breadth: 23,40 m
Gross tonnage: 15,586 t
Net tonnage: 4,676 t



CARGO CAPACITIES

	Weather deck:	Main deck:	Lower hold:
LM:	859 m	820 m	476 m
Deck area:	2610 m ²	2554 m ²	1516 m ²
Height:	4,60 m (garage)	5,00 m	5,00 m
Deck load:	2,5 t/m ²	5,0 t/m ²	8,0 t/m ²
Container capacity:	484 TEU	-	-

RAMPS

Stern ramp 13 x 21 m (LxB), total load 200 t.
 Fixed ramp main deck - tank top, slope <8°
 Fixed ramp main deck - weather deck, slope >7°

Garage = fully covered area under accommodation on weather deck.
 Air drying plant for cargo holds.

Ro-Ro vessel fully equipped for transport of trailers and other wheeled cargo.
 Also suitable for transport of containers and flats. Cabins onboard for up to 12 truck drivers.